



mixertrucks.com
CHAPARRAL
 CONCRETE EQUIPMENT

MAIN OFFICE
 545 S. Nolen Dr., Ste. 100
 Southlake TX, 76092

Tel: 817-764-1066
 Fax: 817-416-9200
 1-888-886-4937



2015 MACK GU813

Wheelbase..... 230"
Engine..... Mack MP7 400 HP
Transmission.....Allison RD4500 Auto
PTO.....REPTO
R. Suspension..... Camelback
F. Axle Cap.....20,000 LB
R. TDM Cap.....46,000 LB
F. Tire Size.....425 X 22.5 STEEL RADIAL
R. Tire Size.....11X22.5 STEEL RADIAL
Tire Condition F/R.....XX% / XX%
Fuel Cap/Tank.....55 GAL AL
Driver Seat.....AIR RIDE
Shipping DIM's.....12'H X 8'W X 27'L
Shipping Weight.....28,000 lbs.
Driver Trainer Seat..... No
Truck VIN.....1M2AX13C6FM030421

Beck 10.5 Yard STD Mixer

Mixer Capacity.....10.5 YD³
Gearbox.....ZT PMK90
Water Tank..... 200 GAL STEEL
Control Location.....IN-CAB & REAR PLAT
Control Type.....Cable Speed, E Function
Extension Chutes..... (2) - 48" STD
Paint Cab/Mixer..... White / White
Miles/Hours..... 62,357 mi / 6,577 hrs.
Drum Condition..... .24/.23/.24/.22
Slump Meter/Location..... Y/Gearbox
Mixer Charge Height..... 12'0"
Mixer S/N.....Beck J-14-27

File: MK15_Beck_RB_FV



mixertrucks.com
CHAPARRAL
CONCRETE EQUIPMENT

MAIN OFFICE
545 S. Nolen Dr., Ste. 100
Southlake TX, 76092

Tel: 817-764-1066
Fax: 817-416-9200
1-888-886-4937



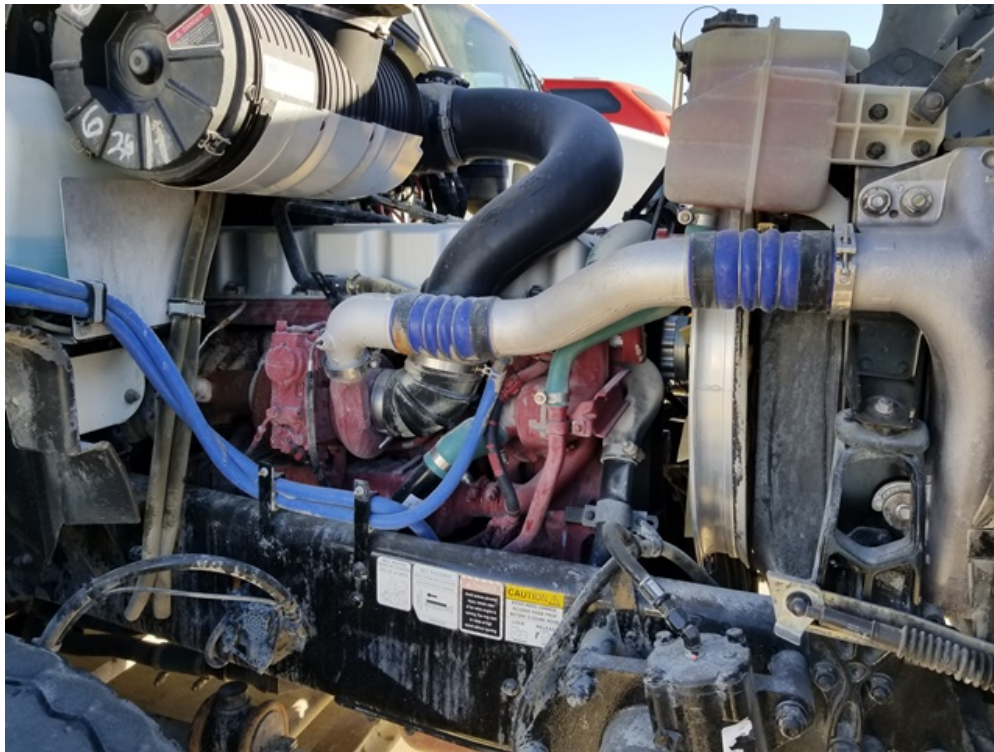
mixertrucks.com



mixertrucks.com
CHAPARRAL
CONCRETE EQUIPMENT

MAIN OFFICE
545 S. Nolen Dr., Ste. 100
Southlake TX, 76092

Tel: 817-764-1066
Fax: 817-416-9200
1-888-886-4937



mixertrucks.com



mixertrucks.com
CHAPARRAL
CONCRETE EQUIPMENT

MAIN OFFICE
545 S. Nolen Dr., Ste. 100
Southlake TX, 76092

Tel: 817-764-1066
Fax: 817-416-9200
1-888-886-4937



mixertrucks.com



mixertrucks.com
CHAPARRAL
CONCRETE EQUIPMENT

MAIN OFFICE
545 S. Nolen Dr., Ste. 100
Southlake TX, 76092

Tel: 817-764-1066
Fax: 817-416-9200
1-888-886-4937



mixertrucks.com