



mixertrucks.com

MAIN OFFICE
3109 Daniieldale Rd
Lancaster, TX 75134

Tel: 817-764-1066
Fax: 817-764-1072
1-888-886-4937



**REPRESENTATIVE PHOTO. ACTUAL TRUCK MAY BE DIFFERENT

2007 Mack Granite CT713

Wheelbase..... 222"
Engine..... MACK MP7 380 HP
Transmission..... ALLISON RD4500 AUTO
PTO.....REPTO
R.Suspension.....Hendrickson
F. Axle Cap.....20,000 LB
R. TDM Cap.....46,000 LB
F. Tire Size.....425 X 22.5 STEEL RADIAL
R. Tire Size.....11X22.5 STEEL RADIAL
Fuel Cap/Tank.....65GAL AL
Driver Seat.....AIR RIDE
Shipping DIM's.....12'H X 8'W X 27'L
Shipping Weight.....28,000 lbs.
Driver Trainer Seat.....YES
Truck VIN.....1M2AT13CX7M003641

McNeilus/MTM Paving Mixer

Mixer Capacity.....10.5 YD³
Gearbox.....ZF-P5300
Water Tank.....150 GAL STEEL
Control Location.....IN-CAB & REAR PLAT
Control Type.....Cable Speed, E Function
Extension Chutes.....(3) - 48" STD
Paint Cab/Mixer.....W&Red/WHITE
Miles/Hours..... 274,004 mi /22,681 hrs.
Slump Meter/Location..... Y/Gearbox
Mixer Charge Height..... 12'0"
Mixer S/N.....MTM 40366

mixertrucks.com



mixertrucks.com

MAIN OFFICE
3109 Danieldale Rd
Lancaster, TX 75134

Tel: 817-764-1066
Fax: 817-764-1072
1-888-886-4937



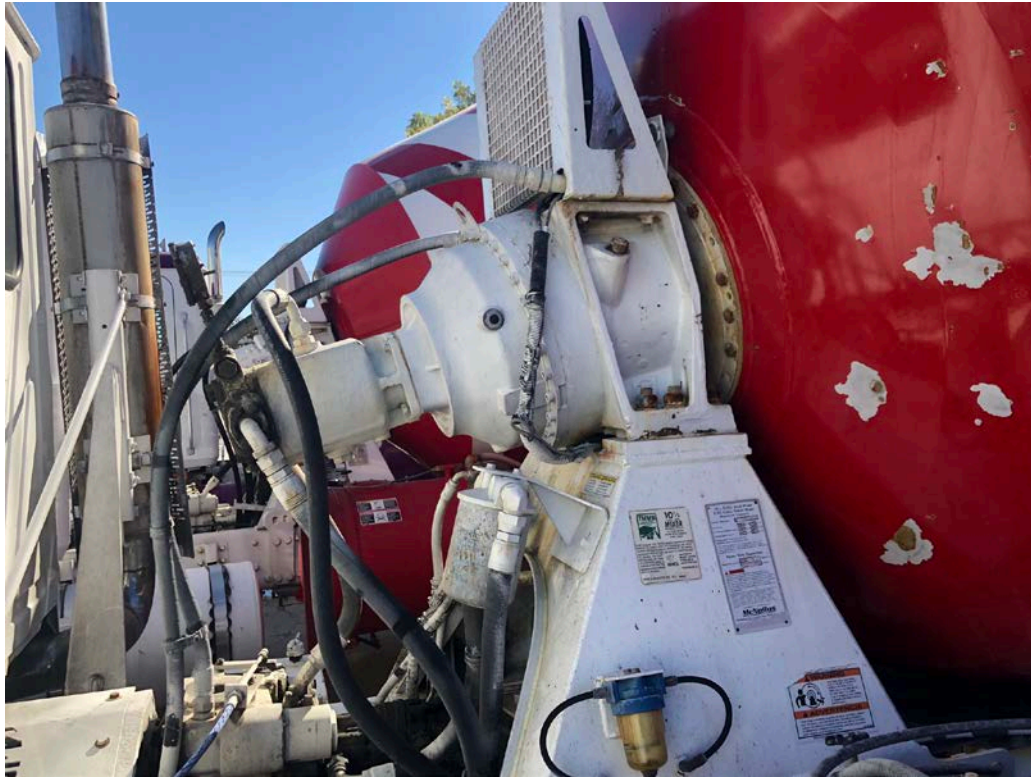
mixertrucks.com



mixertrucks.com

MAIN OFFICE
3109 Danieldale Rd
Lancaster, TX 75134

Tel: 817-764-1066
Fax: 817-764-1072
1-888-886-4937



mixertrucks.com



mixertrucks.com

MAIN OFFICE
3109 Danieldale Rd
Lancaster, TX 75134

Tel: 817-764-1066
Fax: 817-764-1072
1-888-886-4937



mixertrucks.com